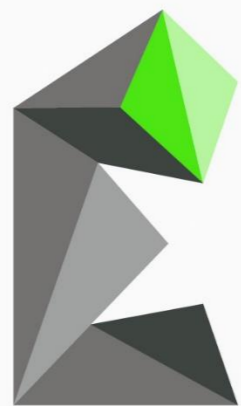


ASX: **KNG**



KINGSLAND
MINERALS

**Developing
Australia's Largest
Graphite Deposit**

3 July 2024

MarketOpen Direct Connect Webinar



Important

Nature of this document: The purpose of this presentation is to provide general information about Kingsland Minerals (ACN 647 904 014) (the 'Company'). Unless otherwise stated herein, the information in this presentation is based on the Company's own information and estimates as of the date of this presentation. In attending this presentation or viewing this document you agree to be bound by the following terms and conditions.

Not an offer or advertisement: This presentation is for information purposes and does not constitute or form any part of any offer or invitation to sell or issue, or any solicitation of any offer to purchase or subscribe for, any securities in the Company in any jurisdiction. This presentation and its contents must not be distributed, transmitted or viewed by a person in any jurisdiction where the distribution, transmission or viewing of this document would be unlawful under the securities or other laws of that or any jurisdiction. In particular, this presentation may not be distributed or released, directly or indirectly, in the United States. This presentation does not constitute an advertisement for an offer or proposed offer of shares. Neither this presentation nor anything contained in it forms the basis of any contract or commitment and it is not intended to induce or solicit any person to enter into, or refrain from entering into, any contract or commitment.

Not financial product advice: This presentation does not take into account the individual investment objectives, financial situation and particular needs of each of the Company's shareholders or potential investors. You may wish to seek independent financial and taxation advice before making any decisions with respect to this presentation. Neither the Company nor any of its related bodies corporate are licensed to provide financial advice in respect of the Company's securities or any other financial products.

Forward-looking statements: Certain statements in the presentation are or may be perceived as "forward-looking statements" and represent the Company's intentions, projections, expectations or beliefs concerning, among other things, future operating and exploration results or the Company's future performance. You are cautioned not to place undue reliance on any forward-looking statement. These forward-looking statements are based on current expectations at the date of this publication. The projections, estimates and beliefs contained in such forward-looking statements necessarily involve known and unknown risks and uncertainties and are necessarily based on assumptions, which may cause the Company's actual performance and results in future periods to differ materially from any express or implied estimates or projections.

Disclaimer: No representation or warranty, express or implied, is made by the Company that the material contained in this presentation will be achieved or prove to be correct. Except for statutory liability which cannot be excluded, each of the Company, its directors, officers, employees, advisers, agents and contractors expressly disclaims any responsibility for the accuracy, fairness, sufficiency or completeness of the material contained in this presentation, or any opinions or beliefs contained in this presentation, and excludes all liability whatsoever (including negligence) for any loss or damage which may be suffered by any persons as a consequence of any information in this presentation or any error or omission therefrom. The Company is under no obligation to update or keep current the information contained in this presentation or to correct any inaccuracy or omission which may become apparent or to furnish any person with any further information. Any opinions expressed in the presentation are subject to change without notice.

Unverified information: This presentation may contain information (including information derived from publicly available sources) that has not been independently verified by the Company.

Why invest in Kingsland Minerals?



Kingsland 100% owns the Leliyn Graphite Project in the NT which hosts Australia's largest graphite deposit



Graphite flake concentrate >94% TGC, test-work for battery anode material



Graphite market forecast to move into deficit on demand from lithium batteries for electric vehicles and storage capacity



China introduced export controls for graphite products from 1 Dec 2023



Market cap at just \$13m (21.5c), \$1.8m cash (Mar 2024), EV \$11.5m, strong news flow from upcoming metallurgical test-work and infill drilling

Maiden Mineral Resource Estimate

Leliyn is the largest graphite deposit in Australia – **with upside**

Inferred Mineral Resource Estimate

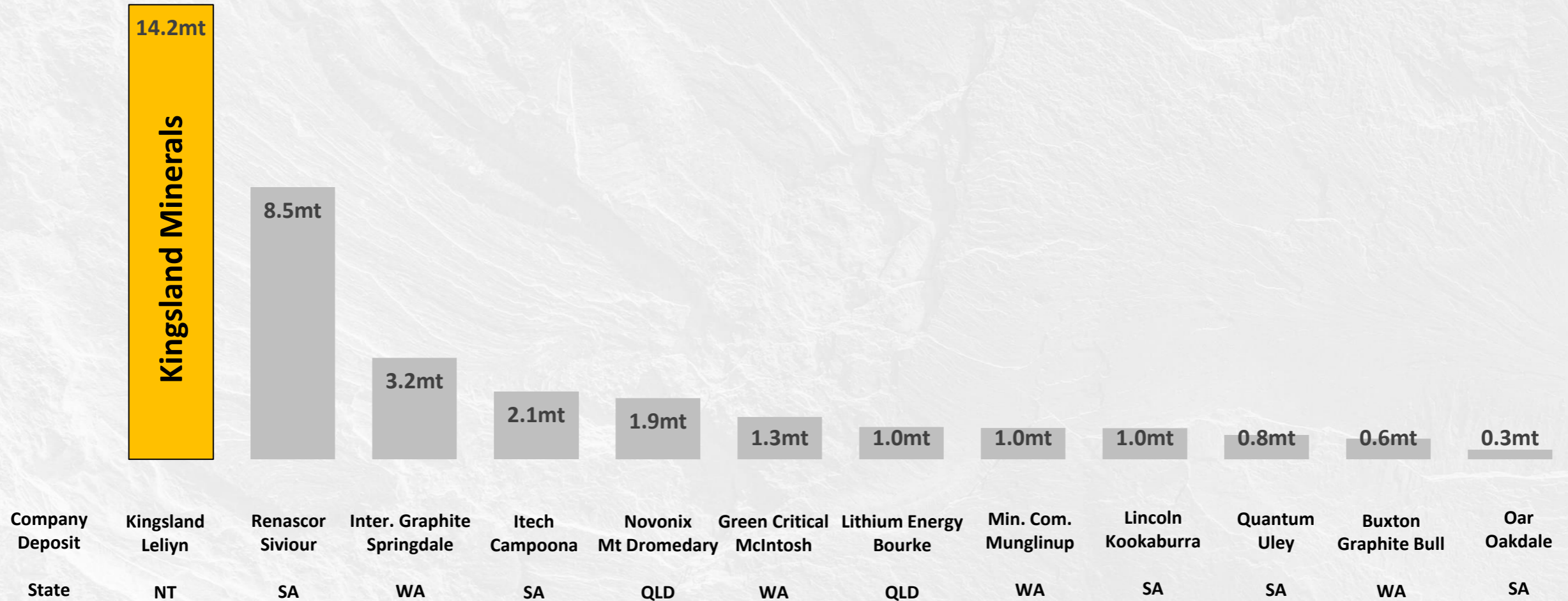
194.6mt @ 7.3% TGC containing 14.2mt of graphite

Leliyn is Australia's largest graphite deposit and is a globally significant deposit

Australian Graphite Deposits

Leliyn is the largest graphite deposit in Australia – **with upside**

Australian Graphite Deposits

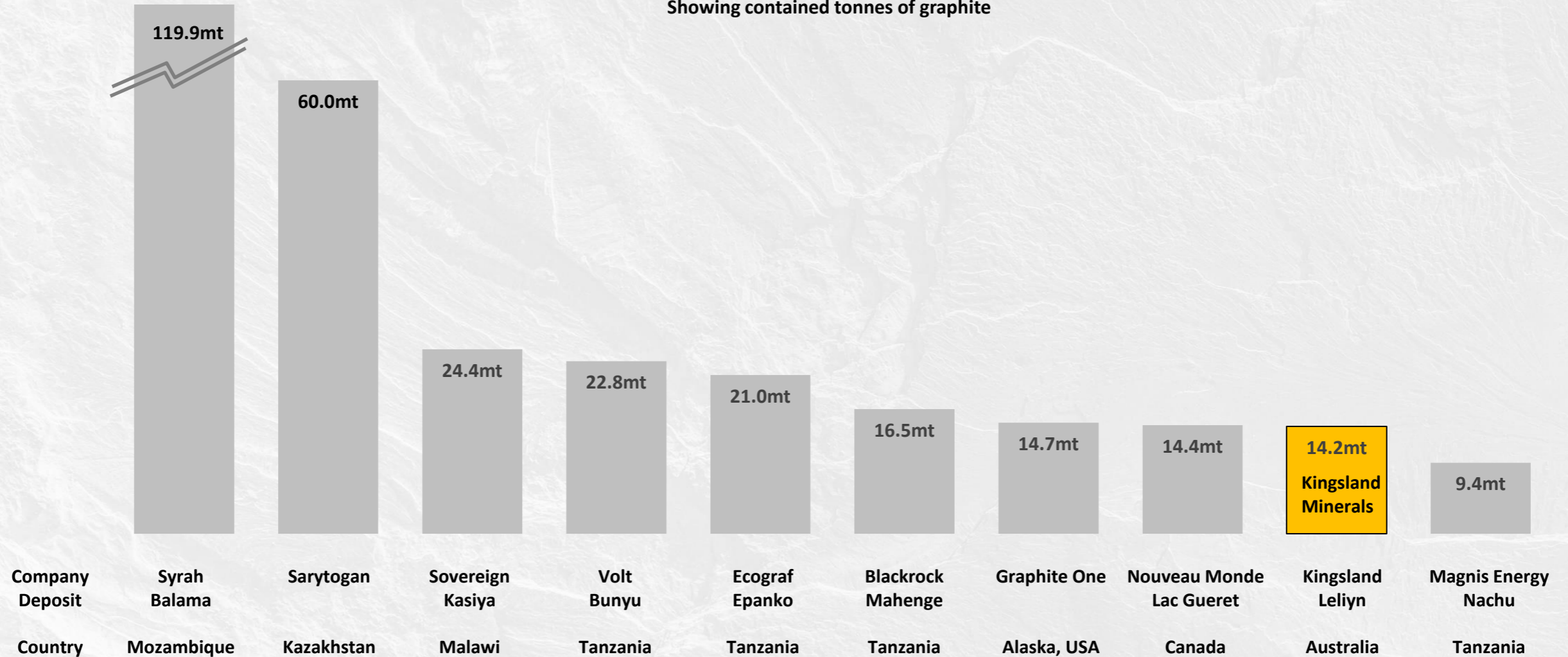


Global Graphite Deposits

Leliyn is a globally significant graphite deposit – **with upside**

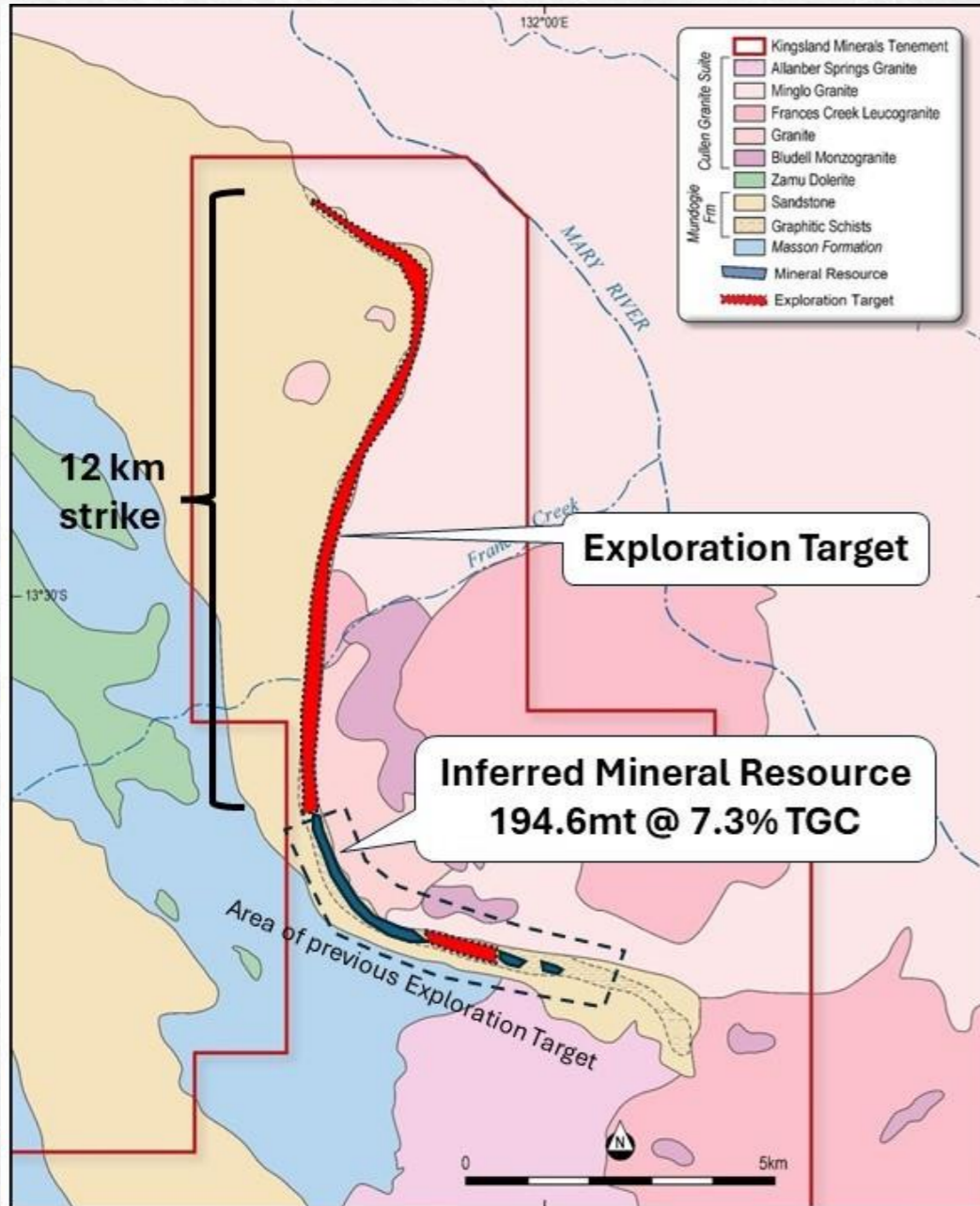
Top 10 Global Graphite Deposits

Showing contained tonnes of graphite



Updated Exploration Target

Leliyn is a globally significant graphite deposit – **with upside**



Leliyn Updated Exploration Target

Tonnes: 700 million – 1.1 billion tonnes

Grade: 7% - 8% TGC

Contained Graphite: 50mt – 90mt

The quantity and grade of the Exploration Target for the Leliyn Graphite Project is conceptual in nature, there has been insufficient exploration to estimate a Mineral Resource and it is uncertain if further exploration will result in the estimation of a Mineral Resource.

Excellent Location

Excellent location in the Pine Creek mining district (PCO)

250km from Darwin Port with rail/road access

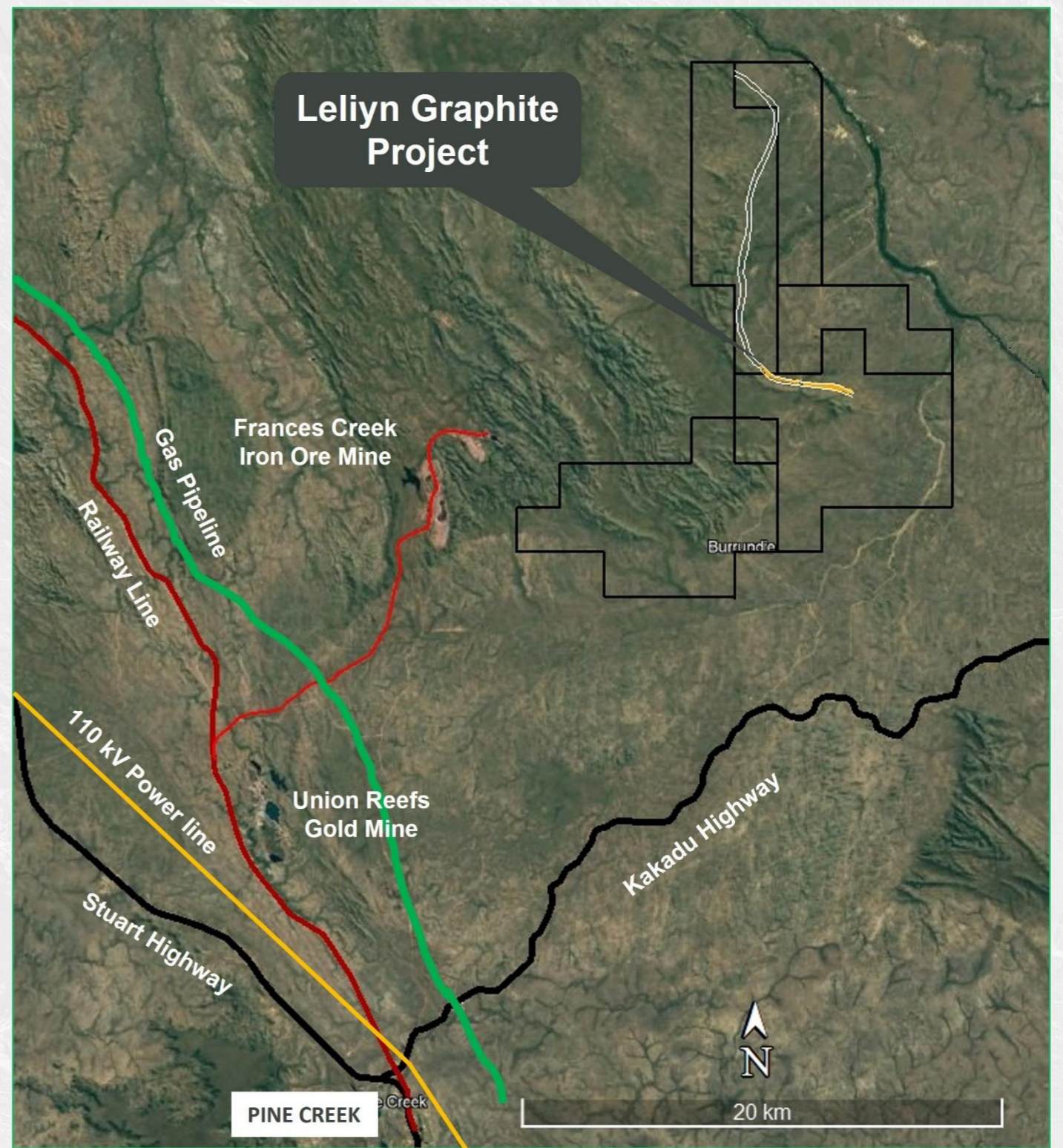
Existing infrastructure with a long history of mining and exploration



Infrastructure in Place

Existing Infrastructure

- ✓ Rail loading area used for Frances Creek Iron Ore Mine in 1970's
- ✓ Haulage road from Frances Creek to rail loading area.
- ✓ Sealed Kakadu and Stuart Highways
- ✓ 110 kV power line
- ✓ Gas pipeline
- ✓ Pine Creek, accommodation, fuel etc



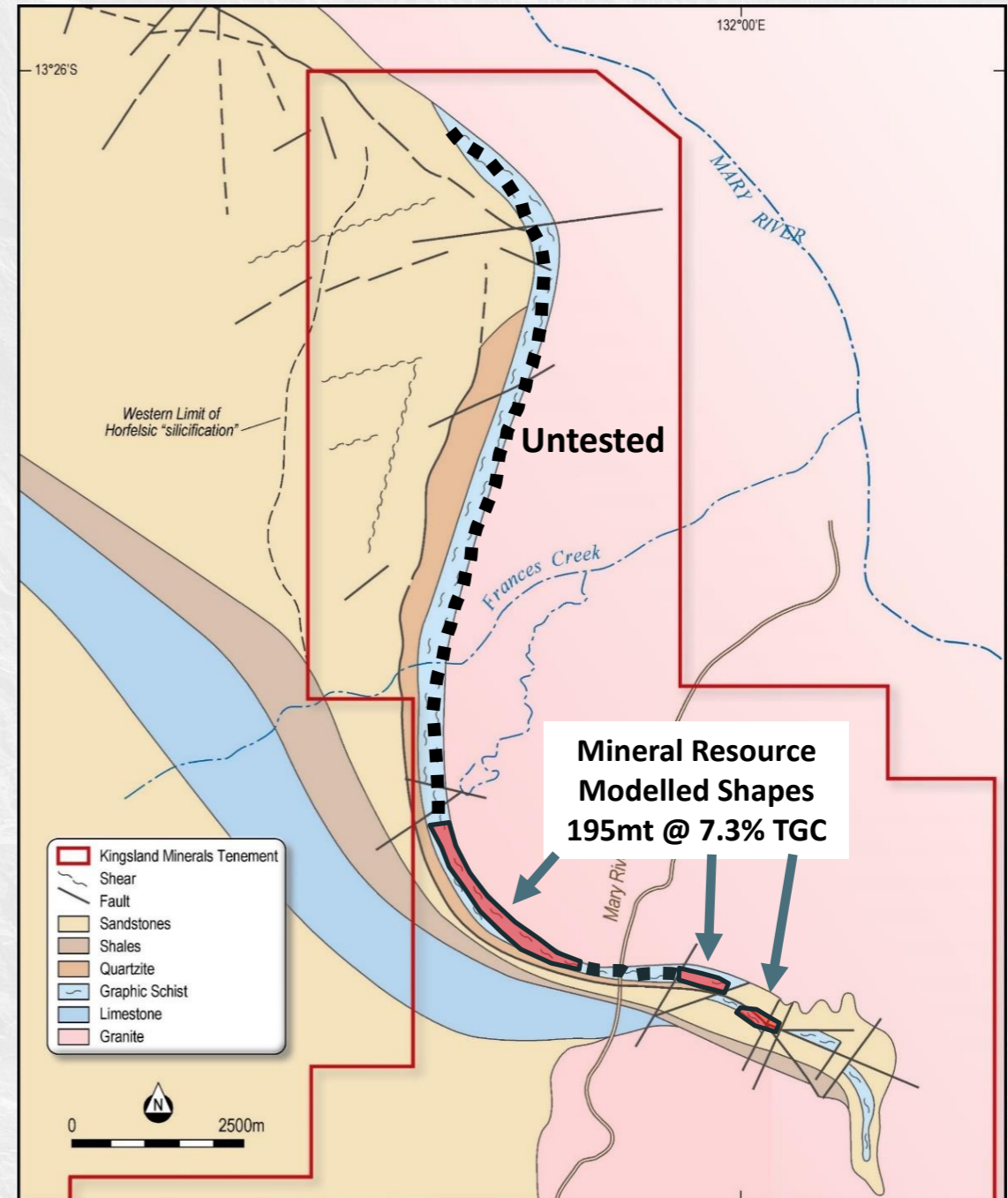
Leliyn Mineral Resource Estimate

Inferred Mineral Resource
194.6mt @ 7.3% TGC containing 14.2mt
graphitic carbon

Considerable upside along strike for
additional resources

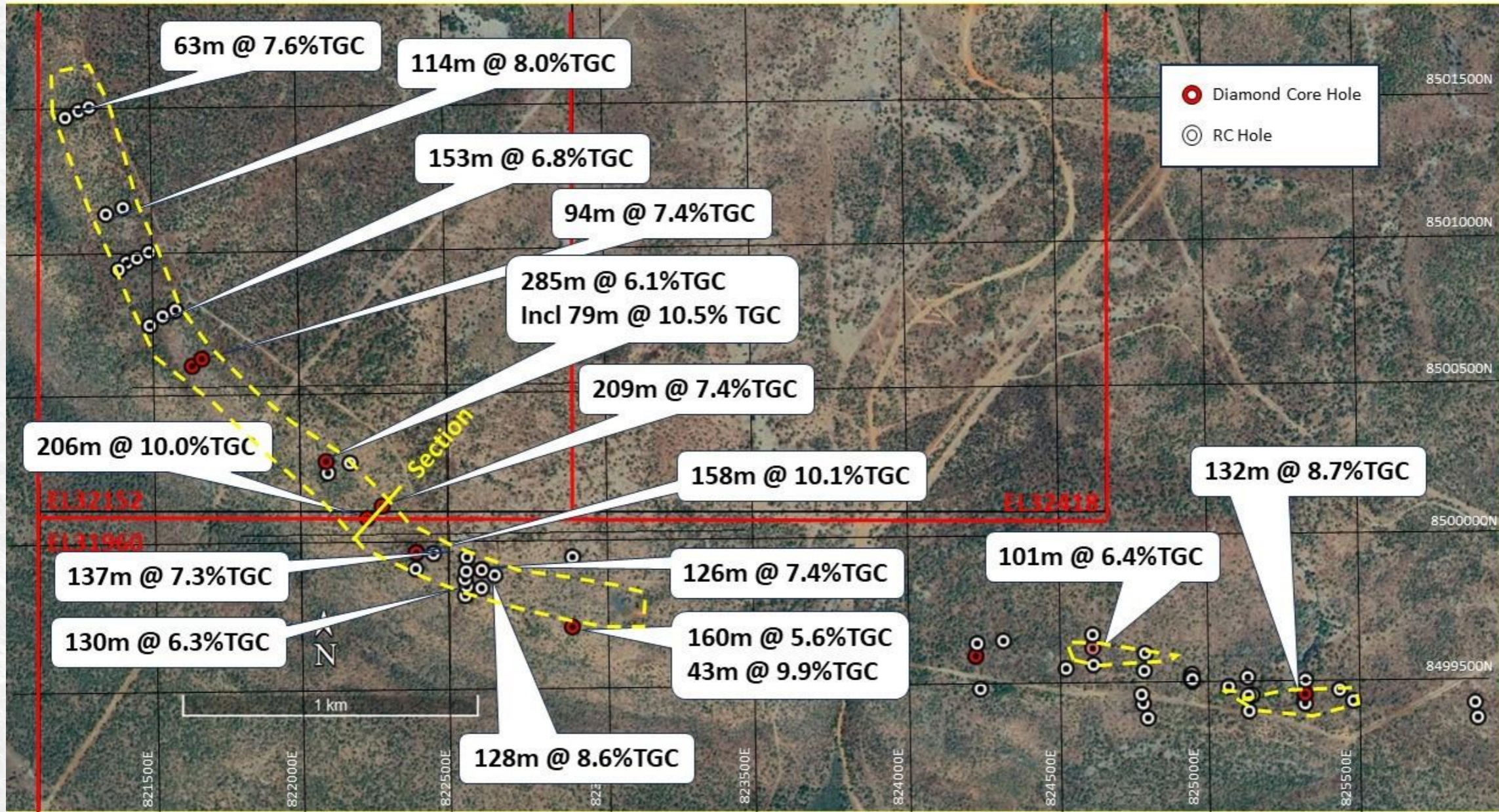
Only **25%** (4.7km) of total graphitic schist
unit has been drilled. **75% (13.5km)**
remains untested. Considerable upside
to significantly increase mineral
resource tonnage.

Ability to optimise flake characteristics
within remaining ~14km of strike



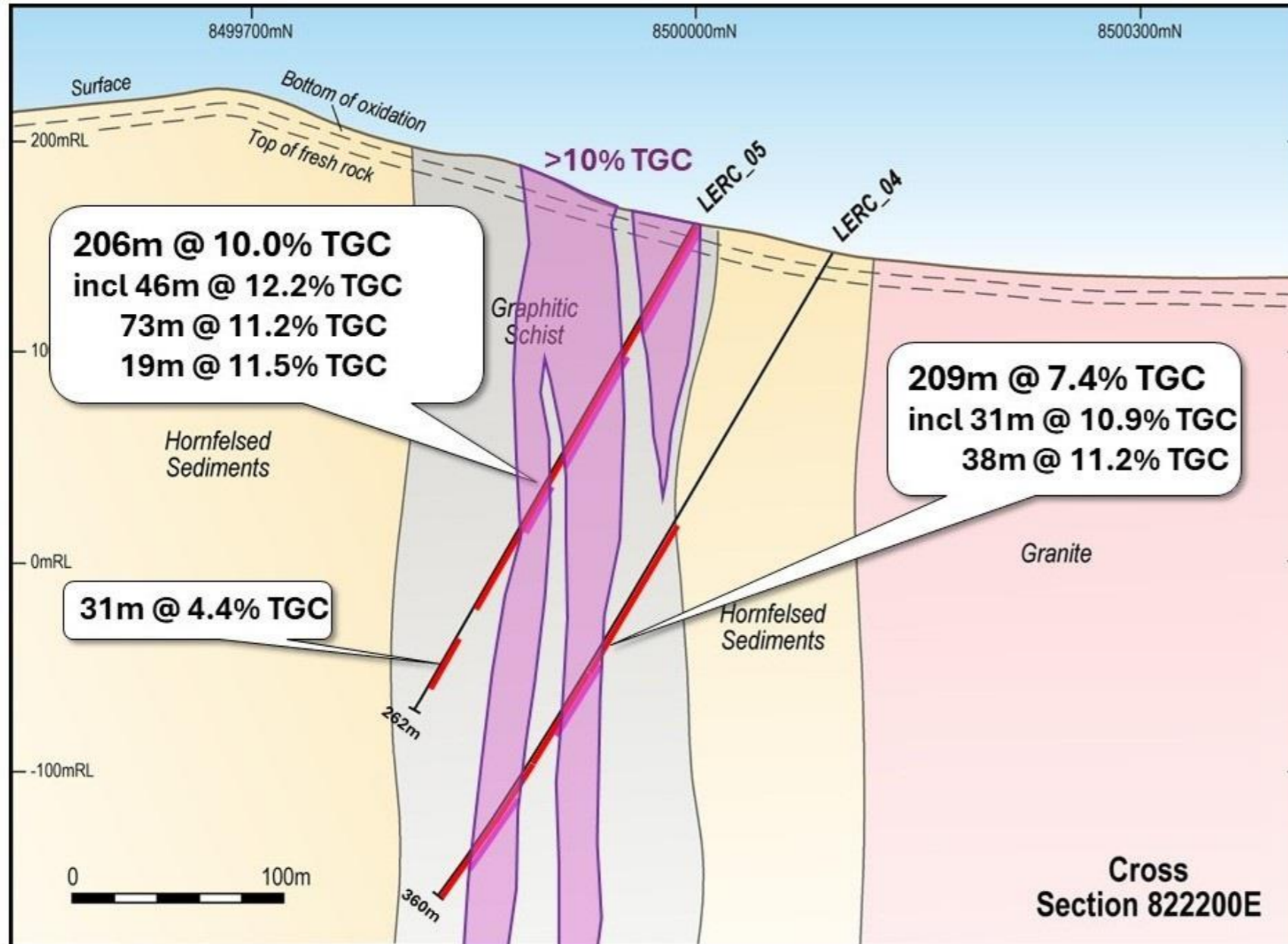
Leliyn Graphite

Mineral Resource Area with drilling to date and location of cross-section



Leliyn Graphite

Outcropping, 100m wide on surface – **excellent open pit mining scenario**



Outcropping mineralisation up to >100m wide on surface

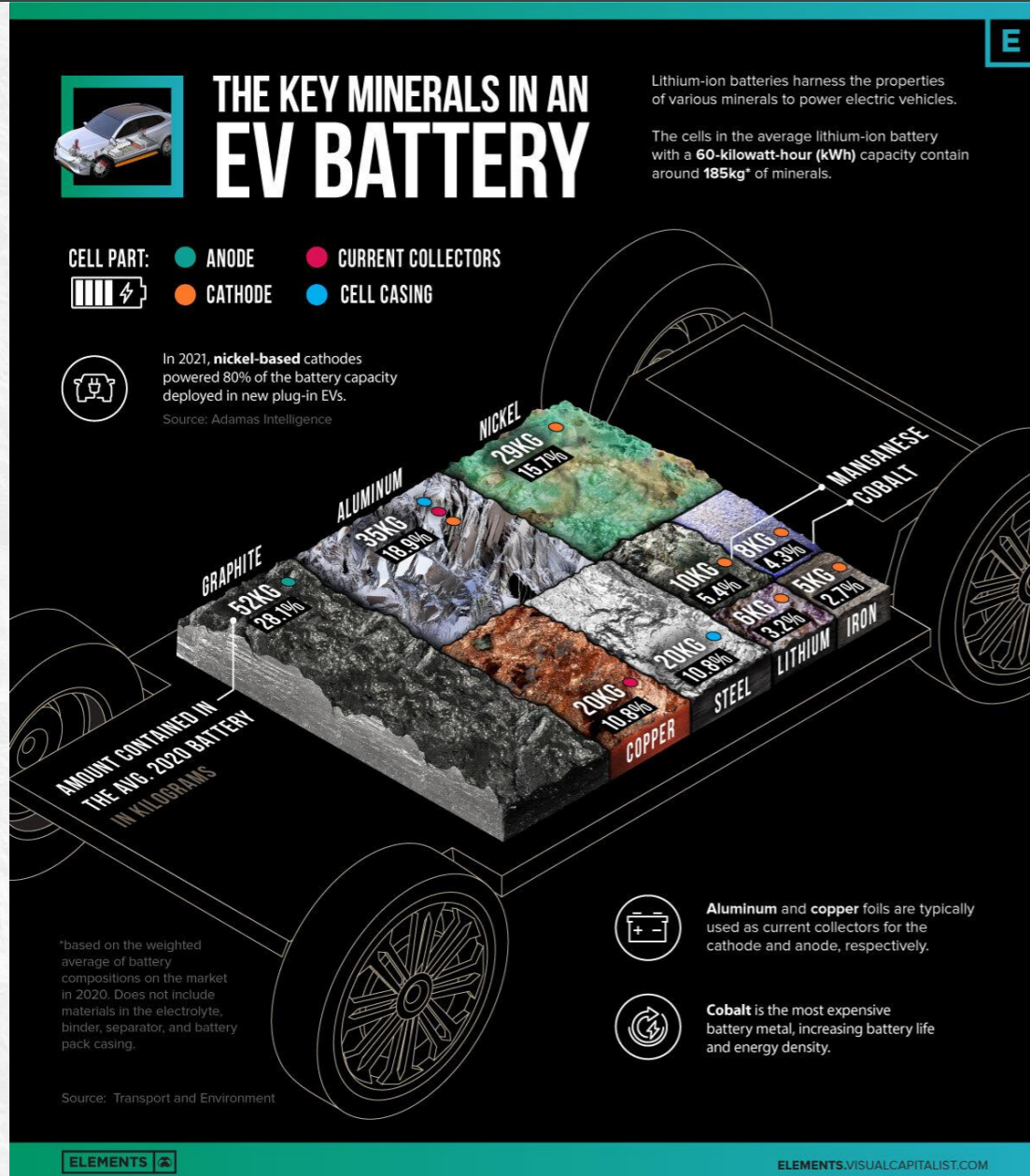
Higher grade zones from surface

Amenable to very efficient and productive open pit mining techniques with very low strip ratio

Continuous along strike and at depth

Graphite Demand driven by Electric Vehicles

EU, UK, China ban ICE by 2035 | 10% of new car sales in Australia are EV's¹



Typical EV battery contains:

52kg Graphite

35 kg Aluminium

29 kg Nickel

20 kg Copper

20 kg Steel

10 kg Manganese

8 kg Cobalt

6 kg Lithium

5 kg Iron

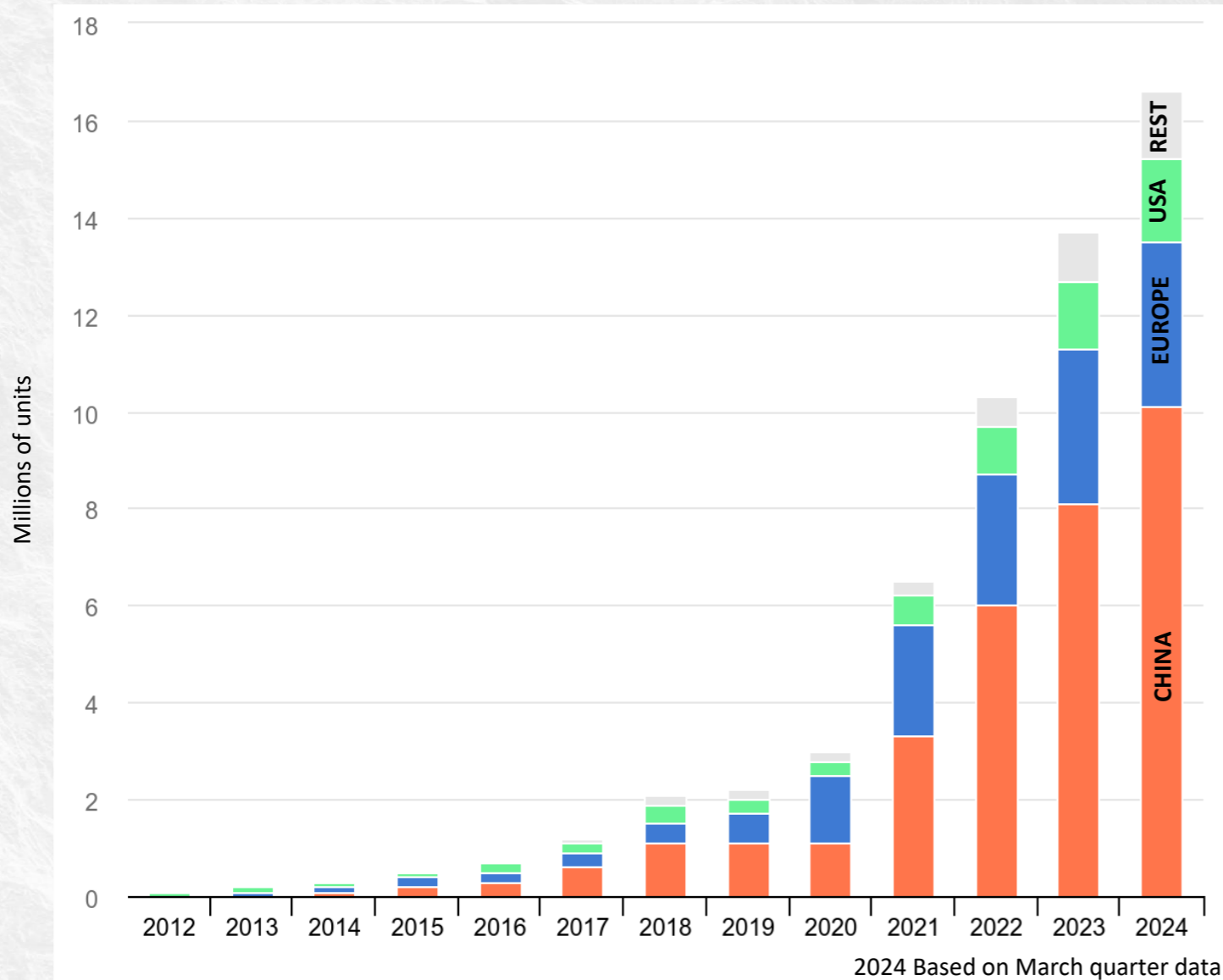
There is more graphite than anything else

Graphite demand will be driven by EV battery use. Internal combustion engines (ICE) phased out by 2035 in EU, China and UK

1) 10% of all vehicles in March 2024, 20% of passenger vehicles (NRMA)

Graphite Demand driven by Electric Vehicles

EV's driving demand growth – demand to outstrip supply



Future Graphite demand linked to EV sales growth and domestic battery supply

To date, China has largely driven EV growth.

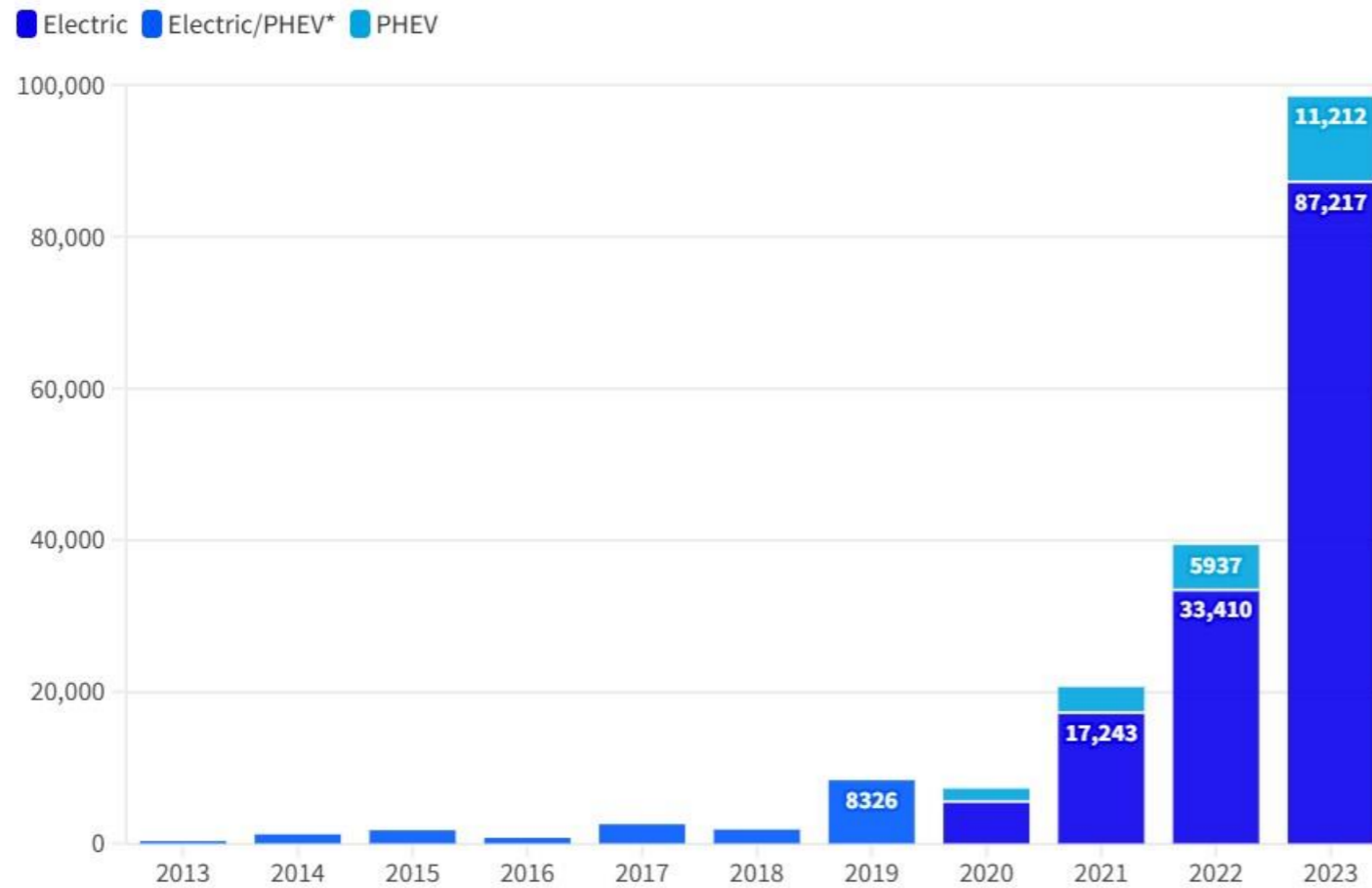
As range, charge times and charging infrastructure improve open market economies will catch up

Graphite Demand driven by Electric Vehicles

EV's driving demand growth – demand to outstrip supply

Plug-in electric sales in Australia

2013-2023



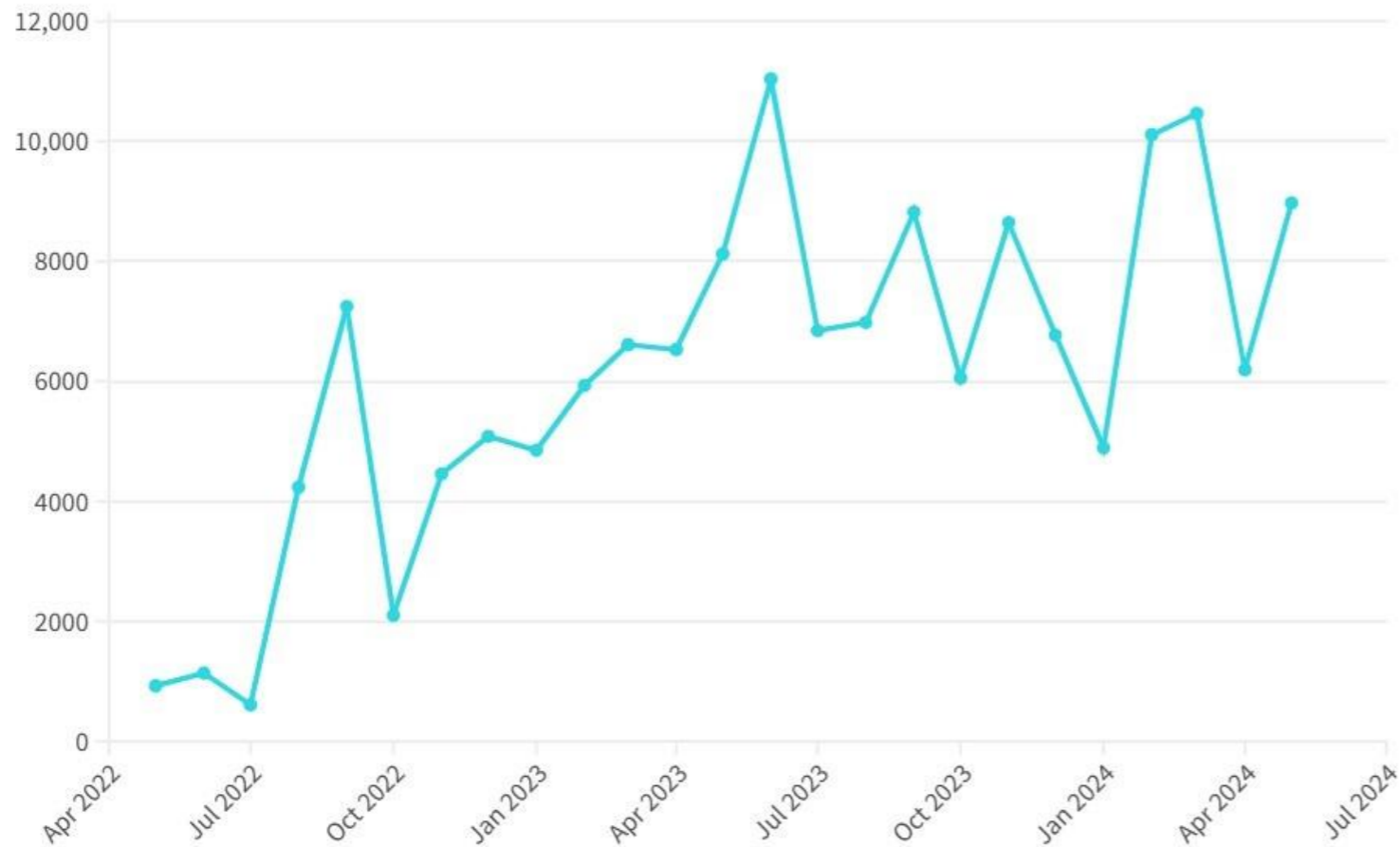
Source: Vfacts • *Electric and PHEV sales were counted together until 2020.
Compiled by Bridie Schmidt for the NRMA.

Nearly 20% of passenger cars sold in Australia are EV's

Graphite Demand driven by Electric Vehicles

EV's driving demand growth – demand to outstrip supply

Australia EV Sales May 2022-2024



Monthly sales of EV's display significant variance

Strong growth in 2022 and 2023 replaced by more consistent figures in 2024.

Strong growth expected to continue with cheaper cars becoming readily available.

Graphite Demand driven by Electric Vehicles

EV's driving demand growth – demand to outstrip supply

There have been 6 EV battery fires in Australia

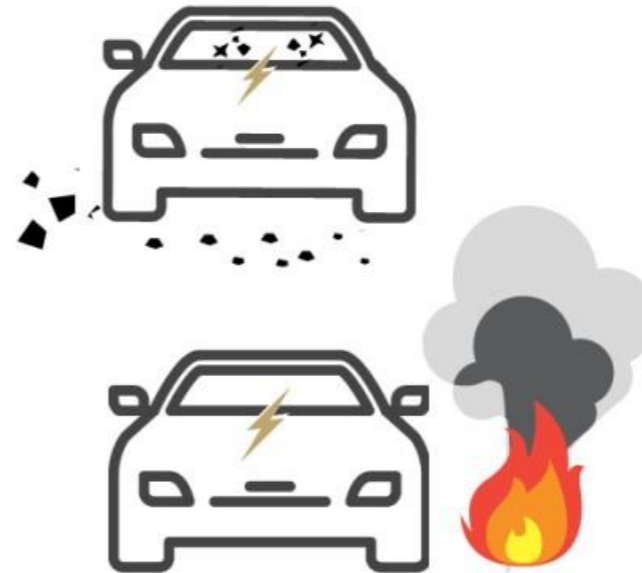
In Australia, there has been a total of six electric vehicle battery fires, caused by battery abuse from:

- Arson x 1
- External fire (structure burnt down around EV) x 3
- Collision x 1
- Road debris x 1



None of the EVs:

- Were on charge at the time
- Were spontaneous or unexplained
- Caused a vapour cloud explosion



In these incidents:

- Most required 10,000+ litres of water
- 2 x were brought under control in <30 minutes
- There were no injuries requiring hospitalisation
- 1 x fatality, cause currently under investigation

[Submission 8 - EV FireSafe.pdf \(nsw.gov.au\)](#)

<https://www.parliament.nsw.gov.au/ladocs/submissions/83044/Submission%208%20-%20EV%20FireSafe.pdf>

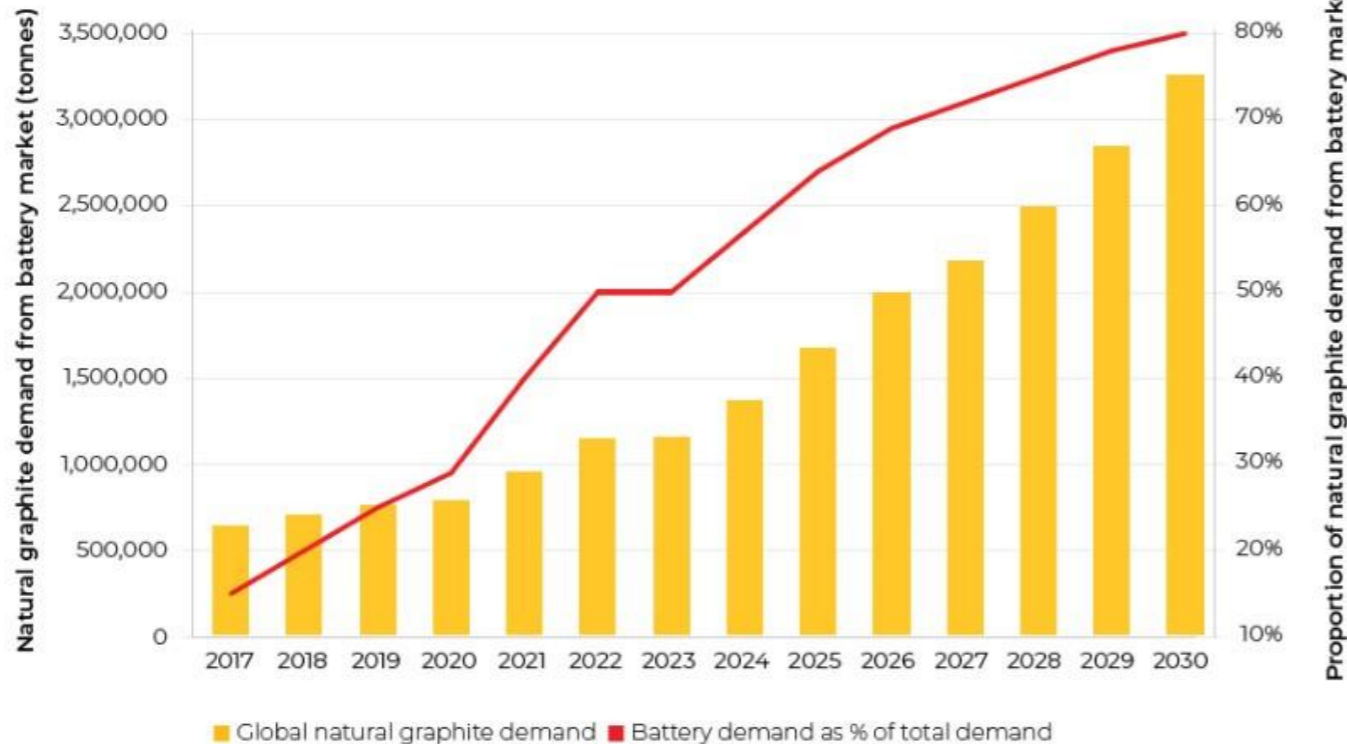
Graphite Demand driven by Electric Vehicles

EV's driving demand growth – demand to outstrip supply



The battery market is the key demand driver for natural graphite

Global demand for natural graphite is forecast to rise 5x between 2017 and 2030, with the proportion of demand coming from the battery market rising from 15% to 80% over this period



SOURCE: BENCHMARK NATURAL GRAPHITE FORECAST Q1 2024



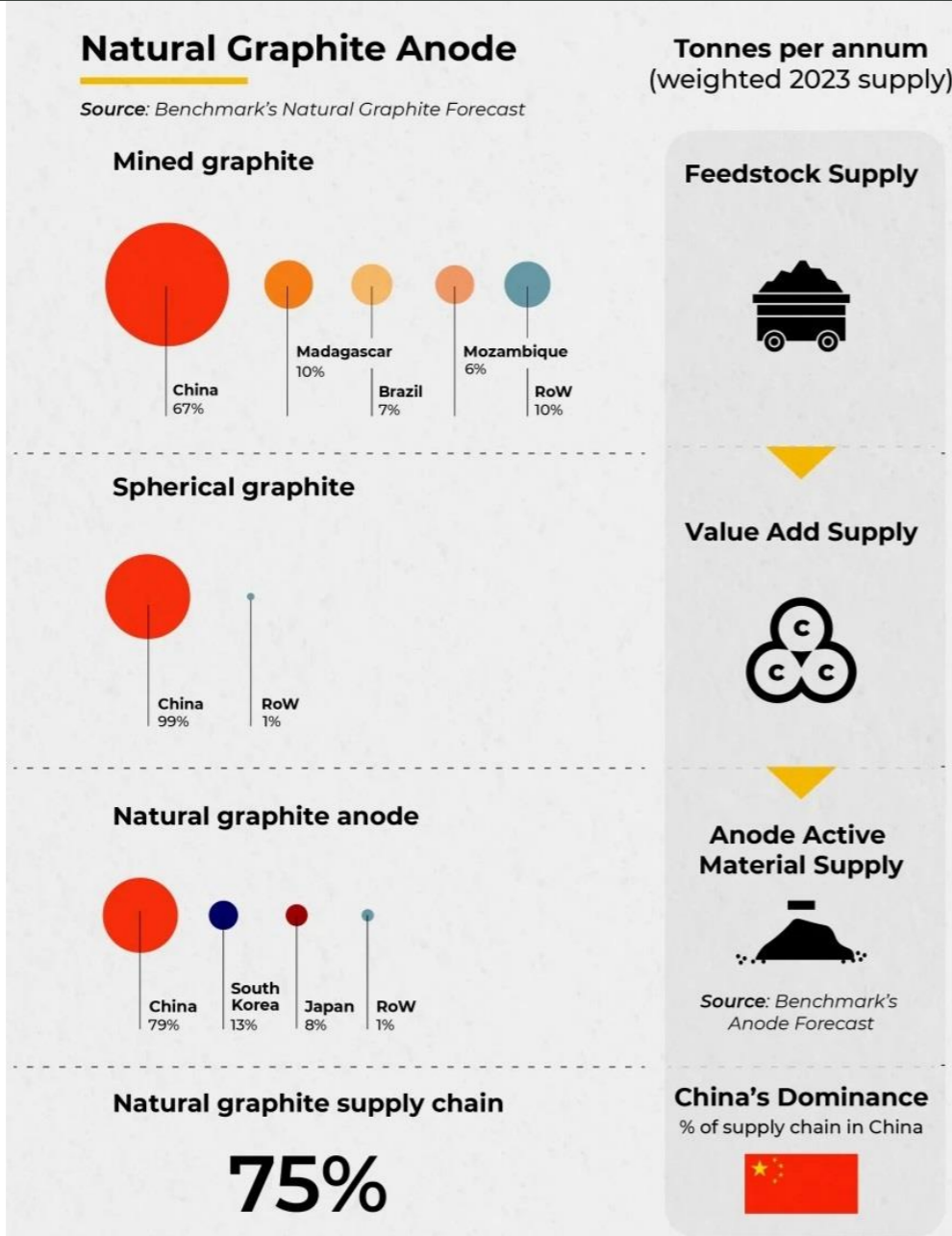
Battery market to grow from current ~55% of total graphite demand to 80% in 2030.

Increased demand combined with supply limitations will lead to increased prices for flake graphite

USA tariffs (25%) on flake graphite delayed two years due to lack of ex-China supply options for IRA compliant production

Graphite Supply

China dominates supply of graphite products – **time to diversify**



Graphite market controlled by ONE main supplier – China

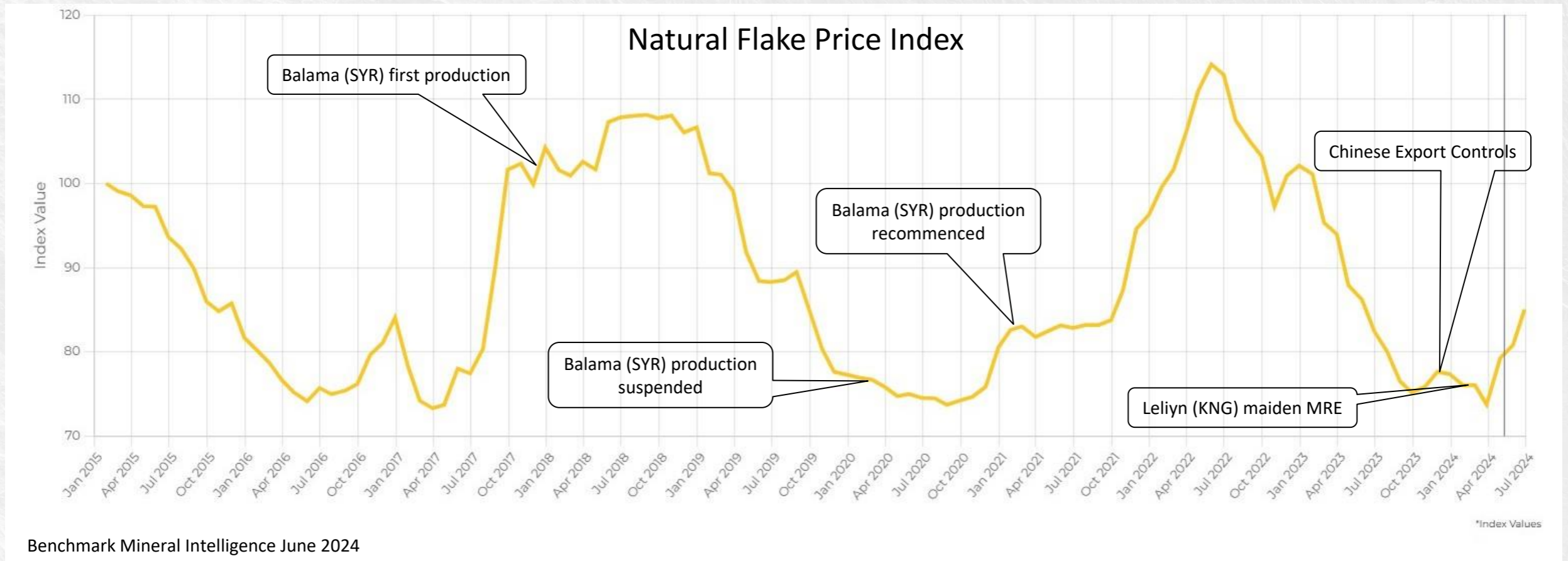
67% of raw flake graphite
99% of spherical graphite
79% of natural graphite anode

China introduced export controls for graphite products on 1 December 2023

Market now diversifying and seek ex-China natural and processed graphite sources

Graphite Price

EV's driving demand growth – demand to outstrip supply



Graphite Price has seen significant fluctuation over past 9 years. Demand for non-China graphite flake sources and the growth in EV sales will see supply constraints and price increases

▶ Leliyn Graphite Metallurgical Test-work

Flotation test-work has produced a commercial grade concentrate >94% TGC

Important milestone as proves that Leliyn can produce a marketable product

Test-work ongoing to optimise flotation flowsheet

Future work to focus on production of spherical graphite

Coarser flake typically used for industrial applications

Leliyn is predominantly fine flake, more suitable for battery applications



Australian Graphite Deposits

Leliyn is perfectly located – with access to Darwin and International markets



Stage 1:

Deliver fine flake graphite concentrate to Darwin at as low a price as possible with targeted superior ESG credentials

Stage 2:

Downstream processing in Darwin to produce refined graphite products for consumption in Australia and/or overseas

Leliyn is ideally placed to export graphite products to Asian, North American and European markets

▶ Kingsland Minerals – Going Forward



Maiden Mineral Resource Estimate Leliyn

- Infill drilling to upgrade to Indicated classification
-



Marketable concentrate >94%

- Commercial grade concentrate at 80% recovery
-



More advanced graphite metallurgy test-work

- Assess optimal end-use for graphite concentrate, suitability for EV battery use
-



Mining studies

- Off-take negotiations
 - Mining lease application
 - Plant flowsheet design
-

Capital Structure

Listed 14 June 2022

61.4m

Shares on issue
(KNG)

18.7m

Options on issue
(KNGO)

\$1.8m

Cash
31 Mar 2024

\$13m

Market Cap
(\$0.215)

\$11.5m

Enterprise
Value

Top 20 Shareholders



Major Shareholders

Directors	21.3%
Bacchus Resources Pty Ltd	8.2%
Trafalgar Resources Pty Ltd	6.7%

Leliyn Graphite



**Significant
Graphite Deposit**



**Leliyn has scale,
Inferred MRE
of 195mt @
7.3% TGC**



**Leliyn has
location, NT
Australia**



**Tier 1 Project
in a Tier 1
Location**



**The world
wants more
graphite**

Board of Directors



Richard Maddocks

Managing Director, MSc (Mineral Economics), BAppSc (Geology), Grad Dip (Finance & Investment), FAusIMM, GAICD

- Geologist with 30+ years of mining, development and exploration experience
- Geology Manager of large gold and nickel mines
- Experienced in business development, asset identification and resource estimation.



Bruno Seneque

Director, CFO, Company Secretary
B Bus, CPA

- Corporate finance professional with 25+ years of experience
- Focused career of 23 years in the minerals industry
- Previously director of ASX listed Kairos Minerals operating in Pilbara of WA
- Significant experience as CFO of ASX listed explorers & mineral producers.



Nick Revell

Technical Director, BAppSc
(Geology) MAIG

- Geologist with 30+ years mining and geology experience
- Significant experience in production and exploration of gold, base metals and uranium.
- Former director of several ASX listed companies.

Appendix 1- Australian Graphite Deposits

ASX Code	Company	Deposit	Country	ASX Source Date	TOTAL MINERAL RESOURCE			Measured			Indicated			Inferred		
					Tonnes	Grade TGC%	Contained Graphite	Tonnes	Grade TGC%	Contained Graphite	Tonnes	Grade TGC%	Contained Graphite	Tonnes	Grade TGC%	Contained Graphite
KNG	Kingsland Minerals	Leliyn	Australia, NT	ASX announcement 13 March 2024	194,600,000	7.30	14,200,000							194,600,000	7.30	14,200,000
RNU	Renascor	Sivour	Australia, SA	ASX announcement 14 Sept 2023	123,600,000	6.9	8,500,000	16,900,000	8.60	1,400,000	56,200,000	6.70	3,800,000	50,500,000	6.50	3,300,000
IG6	International Graphite Ltd	Springdale	Australia, WA	ASX announcement 12 Sept 2023	49,300,000	6.43	3,168,300				11,500,000	7.50	862,500	37,800,000	6.10	2,305,800
ITM	Itech Minerals Ltd	Campoona	Australia, SA	ASX announcement 1 July 2024	35,150,000	5.99	2,104,000	320,000	12.70	40,000	22,600,000	5.30	1,196,000	12,230,000	7.10	868,000
NVX	Novonix Ltd	Mt Dromedary	Australia, QLD	ASX announcement 20 Oct 2016	14,300,000	13.33	1,905,700	1,000,000	12.90	129,000	8,500,000	13.90	1,181,500	4,800,000	12.40	595,200
GCM	Green Critical Minerals Ltd	McIntosh	Australia, WA	ASX announcement 1 July 2024	30,100,000	4.40	1,320,000				19,200,000	4.44	850,000	10,900,000	4.33	470,000
LEL	Lithium Energy Ltd	Bourke	Australia, QLD	LEL 2022 Annual Report	6,300,000	16.0	1,008,000							6,300,000	16.00	1,008,000
MRC	Mineral Commodities	Munglinup	Australia, WA	ASX announcement 28 Apr 2023	7,990,000	12.2	973,190				4,490,000	13.10	588,190	3,500,000	11.00	385,000
LML	Lincoln Minerals Ltd	Kookaburra	Australia, SA	ASX announcement 16 April 2024	12,840,000	7.57	971,980	1,000,000	11.77	117,700	4,860,000	8.80	427,598	6,980,000	6.11	426,682
QGL	Quantum Graphite	Uley	Australia, SA	ASX announcement 14 March 2023	6,900,000	10.98	757,300	800,000	15.60	124,800	4,200,000	10.40	436,800	1,900,000	10.30	195,700
BUX	Buxton	Graphite Bull	Australia, WA	ASX announcement 12 October 2022	4,000,000	16.1	644,000							4,000,000	16.10	644,000
OAR	Oar Resources	Oakdale	Australia, SA	ASX announcement 2 Dec 2015	6,320,000	4.70	297,040				2,690,000	4.70	126,430	3,630,000	4.70	170,610

Appendix 2- Global Graphite Deposits

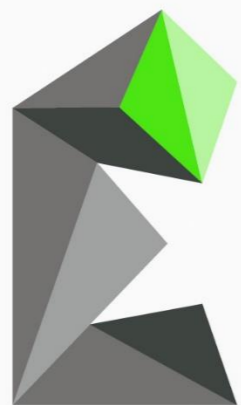
Ticker Code	Company	Deposit	Country	ASX Source Date	TOTAL MINERAL RESOURCE			Measured			Indicated			Inferred		
					Tonnes	Grade TGC%	Contained Graphite	Tonnes	Grade TGC%	Contained Graphite	Tonnes	Grade TGC%	Contained Graphite	Tonnes	Grade TGC%	Contained Graphite
SYR	Syrah Resources Ltd	Balama	Mozambique	2023 Annual Report	1,035,200,000	11.6	119,930,800	21,200,000	16.90	3,582,800	240,400,000	13.00	31,252,000	773,600,000	11.00	85,096,000
SGA	Sarytogan Graphite Ltd	Sarytogan	Kazakhstan	SGA 2022 Annual Report	209,000,000	28.50	60,000,000							209,000,000	28.50	60,000,000
SVM	Sovereign Metals Ltd	Kasiya	Malawi	ASX announcement 5 February 2024	1,809,000,000	1.37	24,400,000				1,200,000,000	1.50	18,000,000	609,000,000	1.10	6,500,000
VRC	Volt Resources Ltd	Bunyu	Tanzania	VRC 2022 Annual Report	461,000,000	4.95	22,824,000	20,000,000	5.30	1,060,000	155,000,000	5.00	7,750,000	286,000,000	4.90	14,014,000
EGR	Ecograp Ltd	Epanko	Tanzania	EGF Resource Update 11 March 2024	290,800,000	7.2	21,010,000	32,300,000	7.80	2,500,000	55,700,000	7.50	4,200,000	202,800,000	7.20	14,310,000
BKT	Black Rock Mining	Mahenge	Tanzania	BKT 2022 Annual Report	213,100,000	7.74	16,500,000	31,800,000	8.60	2,700,000	84,600,000	7.80	6,600,000	96,700,000	7.40	7,200,000
TSXV:GPH	Graphite One Inc	Graphite One	Alaska, USA	Graphite One PFS 13 October 2022	287,210,000	5.13	14,711,357	4,670,000	5.83	272,205	27,870,000	5.15	1,435,135	254,670,000	5.11	13,004,017
TSXV:NOU	Nouveau Monde Graphite Inc	Lac Gueret	Canada	Announcement 22 January 2024	83,460,000	17.19	14,360,000	19,020,000	17.90	3,400,000	46,620,000	16.90	7,890,000	17,820,000	17.2	3,070,000
KNG	Kingsland Minerals Ltd	Leliyn	Australia, NT	Announcement 17 March 2024	194,600,000	7.30	14,200,000							194,600,000	7.30	14,200,000
MNS	Magnis Energy Technologies	Nachu	Tanzania	MNS 2022 Annual Report	174,000,000	5.37	9,400,000	63,000,000	4.70	3,000,000	61,000,000	5.70	3,500,000	50,000,000	5.80	2,900,000

Competent Persons Statement

Information regarding the Mineral Resource Estimate for the Leliyn Graphite Deposit is extracted from the report 'Australia's Largest Graphite Resource' created on 13 March 2024. . This report is available to view on www.kingslandminerals.com.au or on the ASX website www.asx.com.au under ticker code KNG. The company confirms that it is not aware of any new information or data that materially affects the information included in the original market announcement and, in the case of estimates of Mineral Resources or Ore Reserves, that all material assumptions and technical parameters underpinning the estimates in the relevant market announcement continue to apply and have not materially changed. The company confirms that the form and context in which the Competent Person's findings are presented have not been materially modified from the original market announcement.

Information regarding drilling and exploration at the Leliyn Graphite Project is extracted from the reports 'Graphite Exploration Target Update' created on 19 June 2024, 'Graphite Exploration Target' created on 21 March 2023, 'Outstanding start to maiden drilling program with first holes intersecting 150m of graphitic schist' created on 25 May 2023, 'First assays reveal extensive high-grade graphite' created on 15 June 2023, 'Latest assays reveal more extremely wide intersections with high grades' created on 24 July 2023, 'First diamond core assays confirm high grades over big widths' created on 22 August 2023, 'Bonanza intersection of 206m at 10% graphite confirms Leliyn's world-class potential' created on 5 September 2023, 'Testwork confirms favourable flake size for lithium batteries' created on 7 September 2023, 'More Wide, High Grade Graphite Intercepts at Leliyn Graphite' created on 25 October 2023, 'Thickest intercept to date of 285m @ 6.1% TGC at Leliyn' created on 13 November 2023 and 'Further Thick and High Grade Graphite Intercepts at Leliyn' created on 18 December 2023. These reports are available to view on www.kingslandminerals.com.au or on the ASX website www.asx.com.au under ticker code KNG. The company confirms that it is not aware of any new information or data that materially affects the information included in the original market announcement and, in the case of estimates of Mineral Resources or Ore Reserves, that all material assumptions and technical parameters underpinning the estimates in the relevant market announcement continue to apply and have not materially changed. The company confirms that the form and context in which the Competent Person's findings are presented have not been materially modified from the original market announcement.

ASX: **KNG**



KINGSLAND
MINERALS

Contact

www.kingslandminerals.com.au

info@kingslandminerals.com.au

+61 8 9381 3820